

Promenade Bologna



Bologna Welcome Reception Points

eXtraBO Outdoor Infopoint

Piazza del Nettuno 1/ab

extrabo@bolognawelcome.it

City Centre

Piazza Maggiore, 1/e

booking@bolognawelcome.it

Bologna Fair

Centre's reception

in Piazza della Costituzione

Open for the main events

Find out more at
extrabo.com



Illustrations by Andrea Antinori
Graphic design by Studio But Maybe
Re-edited in June 2024, 2020 edition reprint
at Logo Press

Summary

Institutional greetings 02

Itineraries

Ten places not to be missed 04

Focus: Nature that children can enjoy 26

Biking adventures 30

Focus: The Bicipolitana 36

Paths and Routes 38

Focus: Accessible paths 46

Villages to shoot 48

Focus: Monumental trees in the city 54

Disclosing Bologna through the voice of its citizens

Leena Pasanen, artistic director of Mente Locale Film Festival 56

Bologna is a city well worth discovering. While many are already familiar with some of the symbols of our artistic and cultural heritage, such as Towers and the UNESCO World Heritage Porticoes, so many are the hidden gems of the city and its metropolitan area. Landscapes of various kinds and colours, surprising glimpses, or secret courtyards, often revealed only through a door left open by chance. Bologna literally conceals an extraordinary green heritage, a naturalistic landscape abounding in parks, canals, urban woods, and gardens, soon to become a dimension of urban space, partly thanks to the Green Footprint, an ecological infrastructure that will make Bologna a biodiversity capital. This edition of Promenade provides a vital map of such paths, an indispensable guide for discovering the natural and landscape wonders of Greater Bologna, from the peaks of the Apennines to the flatlands over the urban centres of towns and cities.

Matteo Lepore

Mayor of the Metropolitan City
and of the Municipality of Bologna

Bologna is not only about porticoes and towers. It is also a large nature park stretching from the northern plains to the southern hills and mountains, taking in hamlets and fortresses nestled in the hills towards Imola. This green wonderland, with its cycle routes, paths and wetlands, used to be known mainly to the people of Bologna. But our travel habits have changed since the pandemic, and we now want to spend more time outdoors and explore local areas slowly, on foot or by bike. Tourists who come to Bologna are rediscovering this area too, which is perhaps less known, but just as beautiful. The city has anticipated this trend: in fact, in 2019 it opened an eXtraBO info point right in the city's historic centre, dedicated to promoting natural areas around Bologna and a wide and diverse range of tourist attractions suitable for all age groups. In these pages you will find accounts by outstanding figures who will take you on a journey to discover this area: now let yourself be inspired and set off!

Franco Baraldi

Former President of Bologna Welcome

Our way of engaging in tourism is undergoing a major transition, we are becoming greener, broader, slower. While not everyone is aware of this, there are some indicators testifying thereto. Every year almost 30.000 hikers turn up in Piazza Maggiore with backpacks on their shoulders, ready to set out on the trails we have created, promoted and organised. In addition, there is a considerable number of Bolognese “from the city” who have rediscovered the pleasure of being tourists at home.

As the boundaries widen, the tourism system becomes more sustainable; as proximity tourism proposals are enhanced, the impacts and positive repercussions are better distributed; as the hectic pace of discovery slows down, we truly get to discover, for besides visiting, we actually feel. Hence, here is a list, by no means exhaustive but certainly representative of the proximity heritage that lies just outside your door, biding its time and waiting to be visited. Please make good use of it, but most of all treat it with the respect due to a fragile miracle, well aware that, as tourists, we decide every day what model of territorial enjoyment we are promoting.

Mattia Santori

President of Tourist Territory Bologna-Modena

Bologna is a continuous discovery also for the locals who live and experience the city every day. Literally behind each corner, you will find a peaceful spot also in the nature. You will meet gems that shine in the greenery, parks that are almost uncontaminated, waters that flow placidly. The Apennines are full of forests that seem enchanted and charming villages that seem out of a fairytale. This booklet, *Promenade*, is an opportunity to discover and rediscover our rich offer of green areas as well as the beauty of spending a day outdoors. Follow the mountain ridges that we will make you discover in this booklet as well as the paths marked by the presence of trees. You will feel the urge to love trees even more. They are the best gift to hand down to the future generations. This is not a guide, it is simply an invitation to immerse yourself in our rich green heritage. You will be reinvigorated.

Valerio Veronesi

President of the Bologna Chamber of Commerce

Ten places not to be missed



Walk along forest paths, wander through huge parks and natural oases, stroll through valleys and past monumental trees. A single goal: to fill your lungs with oxygen

Rocchetta Mattei

The majestic fortress stands unchallenged, surrounded by the green Tuscan-Emilian Apennines; it was built by Count Cesare Mattei on the ruins of the ancient medieval castle of Matilde di Canossa. An educated and eclectic personality, the Count personally supervised its construction "having at his command artisans of every trade". The fusion of different architectural styles, such as medieval Gothic and Moorish, make it a timeless, hypnotic and fantastic place to visit, with a labyrinthine intertwining of expertly decorated rooms. The journey into the rooms of the wonders of Count Mattei starts from the stone staircase, guarded by a hippogriff and a winged demon, representing the evil, and, therefore, left outside the doors of the castle.





Vena del Gesso Romagnola Regional Park

The Vena del Gesso Romagnola Regional Park is a 25-kilometre-long karst mountain range in the area between Imola and Faenza, running through the valleys of the Sillaro, Senio and Lamone rivers. With their deep caves of speleological interest and mysterious tunnels, these mountains are almost entirely composed of selenite, a type of gypsum that accumulates in the form of translucent flakes and is Italy's longest gypsum ridge. The park can be explored on foot and by mountain bike; all routes start and end at the main car park. Nordic walking poles are available free of charge from the Ca' Carnè Visitor Centre in Brisighella (RA) and the La Casa del Fiume Visitor Centre in Borgo Tossignano (BO).

La Casa del Fiume Visitor Centre
Via Rineggio 22, Borgo Tossignano (BO)
bwelcome.it/extrabo-gypsum



La Bora Naturalistic Area

It is one of the protected lowland areas where there is a centre for the repopulation of the European pond turtle (or European pond terrapin), a local species, severely tested by the "exotic" turtles that are occupying the entire habitat. Thus, right here, every year many small turtles grow in protected tanks and are finally released into the surrounding environment.

Among the main attractions of the Bora there are: the birds that are, undoubtedly, among the easiest species to observe in the area. In the various seasons, however, it is also possible to admire various butterflies, grasshoppers and praying mantises, while in the large tanks of the Amphibian Centre there is no shortage of frogs, newts and dragonflies.

Villa Ghigi Park

The Park, with its 28 hectares developed on the hillsides in the immediate outskirts of the city, offers opportunities to discover the natural and historical treasures of the area: from themed itineraries, organised within the boundaries of the Park of Villa Ghigi and other parks of the first hillsides, up to those further away, such as those climbing to the Pliocene Spur or reaching the panoramic views of Monteveglio. Inaugurated and opened to the public in 1975, the Park is a precious area of biodiversity in the heart of the city thanks to its rich mosaic of different environments. If you carefully observe the wide meadows, hedges and shrubberies, you can find many wild plants, such as primroses, violets, orchids and tulips. As a legacy from the past rural traditions of the area, there is no shortage of rows of pears, almonds and sweet figs.



Suviana and Brasimone Lakes Regional Park

The park stretches across the central part of the Bolognese Apennines and includes Lake Suviana, one of the artificial region's biggest lakes, and Lake Brasimone, which was formed artificially after dams were built in the early 20th century to produce hydroelectric power. These two lakes are surrounded by woodland including beech trees and magnificent coniferous forests. Many sporting activities such as canoeing and windsurfing are possible at the lakes, and there are also bathing facilities, dining locations, picnic areas, and hiking trails where you can spot deer, roe deer, fallow deer and wild boars. These include the "Alta Via dei Parchi" hiking trail of about 500 km, ready to be explored.

Museo del Bosco Visitor Centre

Via Porancè 8, Loc. Poranceto-Camugnano (BO)

bwelcome.it/extrabo-lakes





Chestnut groves of Castel del Rio

This is one of the most densely populated chestnut-growing areas in Italy, where the chestnut is the PGI trademarked fruit par excellence, to such an extent as to be the focus of the Museo della Civiltà del Castagno (Museum of the Civilisation of the Chestnut) in Palazzo Alidosi.

Since the Middle Ages, these delicacies have been staple food for the local mountain population and around the year 1000, in the Apennines, chestnut groves took the place of oak forests, becoming such a fundamental resource that they were called 'the bread tree'. The village was the domain of the Alidosi family and seat of their stately residence, today the municipal headquarters and the Museum of the War of the Gothic Line, as well as of the famous Alidosi bridge over the Santerno River.

Corno alle Scale Park

The Corno alle Scale Park holds the highest peak of the Bolognese Apennines, a massif that reaches 2.000 metres and is marked up to top of the summit with layers of sandstone from which it takes its name: the "Scale (Stairs)". During winter, the peaks and the surrounding nature are painted white, welcoming winter sports enthusiasts among the ski lifts. The entire green area confirms the naturalistic importance of the place, thanks to the interesting geological and mineralogical areas and the luxuriant flora and fauna, which make it an ideal destination for hikers and skiers. Along the characteristic and sinuous Dardagna stream, you can reach the real jewel of the Park: the spectacular waterfalls consisting of 7 jumps that, with the roar of the waters, break the silence of the beech forest, and make this place magical and evocative.





Villa Smeraldi Park

This majestic country mansion, formerly known as a "casino" or palace, can be traced back to the 18th century when, in 1783, an agricultural estate, called "del Palazzo (of the Palace)", appeared among the properties of the Zambecari Counts. Since 1973, it has housed the temporary exhibitions of the Museum of Peasant Civilisation (Museo della Civiltà Contadina), the photographic archive and the library.

The museum is perfectly immersed in the events that tell about a place with a fascinating story, full of adaptation testimonials developing around it, and, through its halls, it narrates the work cycles and daily life of the countryside between the late Nineteenth and Twentieth century. The park is "imported" and is classified as a romantic, "English style" park.

Sanctuary of Madonna del Faggio

The sanctuary is nestled amidst the dense woodland of the Bolognese Apennines, between the municipalities of Porretta Terme and Lizzano in Belvedere. It was built to honour the terracotta image of the Virgin Mary: it is believed that she appeared beneath a large beech tree not far from here. The feast of Sant'Anna takes place on 26 July each year, marked by a procession that goes all the way to Borgo di Castelluccio, a little gem nestled in the nearby mountains. You can get to the sanctuary by car or via a hiking trail, which is both challenging and exciting. Also located nearby is Manservigi Castle, a fascinating example of neo-Gothic architecture with restored works by the Italian painter Giacomo Lolli.

Sanctuary of Madonna del Faggio

Via Piave, Loc. Castelluccio, Porretta Terme (BO)

bwelcome.it/extrabo-beech





Quadrone Oasis

A real naturalistic treasure is preserved in the municipality of Medicina, in the Buda district: the "Il Quadrone" Wildlife Protection Oasis, which was established in 1985 and covering about 270 hectares. Of these, more than 200 are cultivated with cereals, sunflowers and Alfalfa (or Lucerne), while the extensive wetland houses numerous animal and plant species. The area is an important node of the Natura 2000 Network, the European ecological network, which aims to protect biodiversity by contributing to improving the quality of life through sustainable development. Within the premises there is an itinerary that, starting from the Visitor Centre, allows you to observe the different environments with their flora and fauna and where you can practice birdwatching.

Focus

Nature that children can enjoy

Rolling in the meadows, growing curious about unknown trees and animals, climbing chalk mountain sides or splashing through waterfalls: children will be captivated by Bologna's nature.

The adventures begin with the many caves located throughout the area, such as the Labante Caves in Castel d'Aiano and the Gessi Caves in Zola Predosa, the Farneto Caves in San Lazzaro di Savena, the Spipola Cave in Gessi Bolognesi and Calanchi dell'Abbadessa Park and the Re Tiberio Cave in Vena del Gesso Romagnola Park in the Imola area. At the La Rizza Oasis, a protected natural area in the Ex Risaia di Bentivoglio (BO), children can enjoy bird watching many resident and migratory bird species and will also be fascinated by the beautiful white stork that has returned to nest here after centuries. Also, in the dense woodland of more than 19 hectares, at the Bosco della Frattona Oasis just outside Imola, children will be enchanted by the green woodpeckers and great spotted woodpeckers that have found refuge here. Spring and autumn are the best seasons to visit the oases.

Find out more on

bwelcome.it/children



The image shows an office interior with a light green wall. On the wall, the 'eXtraBO' logo is displayed in white, featuring a stylized white circle with a horizontal line underneath. To the right of the logo is a large, blue, stylized map of the Emilia-Romagna region. In the foreground, a wooden desk holds a small framed photo of a hand holding a smartphone, a blue stapler, a pen holder with pens, and a laptop. A large, dark green curved shape overlays the right side of the image.

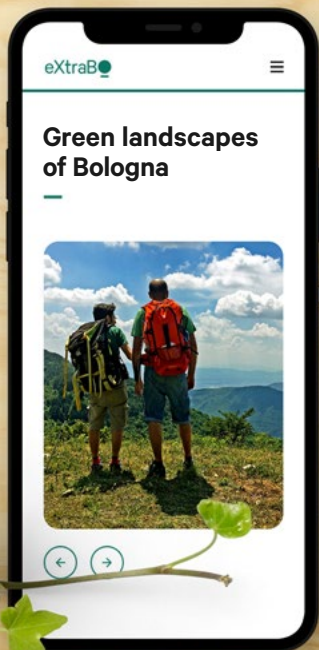
eXtraBO

Many places, events and experiences to enjoy outdoors in Bologna

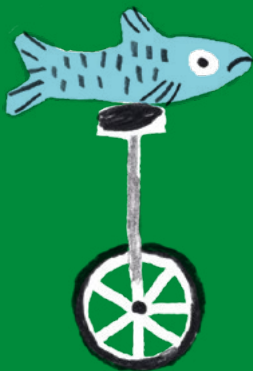
eXtraBO outdoor infopoint
Piazza del Nettuno 1/ab

Explore and book your visit on extrabo.com

  eXtraBO



Biking adventures



presented by
Linda Cavicchi

Tour, cycling and environmental guide.
She is in charge of tourism for Sustenia,
a company that manages protected areas and promotes
local tourism in the plains around Bologna.

**Get on your bike
and leave the noisy
city streets behind.
From mountains to
plains, oases and
waterways, as well
as historic buildings
and Romanesque
parish churches:
experience a new
lifestyle and green
travel in Bologna**



Ph. The Crowded Planet

Sun Route

Part of the long Eurovelo 7 route that crosses Europe, passing through Emilia. The Sun Route follows the Bologna-Verona railway and is suitable for families and all kinds of sports since it also has bike-train connections. Discover hidden gems such as the Romanesque parish church of Sala Bolognese, the Borgo Rotondo, i. e. the historic centre of San Giovanni in Persiceto, and murals by Gino Pellegrini. Also, look out for white storks in Crevalcore, before continuing on to Castle of the Pico in Mirandola, near Modena.

From Bologna to Mirandola (MO)
bwelcome.it/extrabo-sun

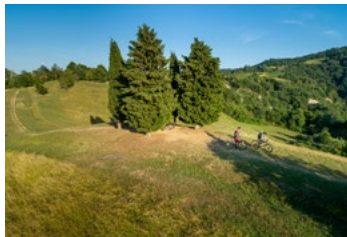


© IF

Santerno Cycle Route

As you cross the valley of the Santerno river, walk through the vines of Mordano all the way to the centuries-old chestnut groves of Castel del Rio near Imola. The route has 5 stages totalling 43.6 kilometres of sheer adventure across the rolling hills and steep-sided silver ridges of the Vena del Gesso Romagnola Regional Park. Enjoy exploring the area, known for its lush greenery, its culture and culinary traditions. On the way, catch your breath at the Church of San Prospero Vescovo, the historic centre of Imola, or the Alidosi Bridge and Palazzo Alidosi.

From Mordano (BO)
to Castel del Rio (BO)
bwelcome.it/extrabo-scycle



Ph. Lab051

Bologna Montana Bike Area “BOM.B.A”

All mountain bike, handbike and tandem enthusiasts know how important it is to carefully choose routes and consider the terrain, fast jumps and descents, banked turns and technical stretches. The Bologna Montana Bike Area in the Bolognese Apennines meets all these requirements: it offers many routes of varying length that can be enjoyed in all seasons, from the Loiano to the Benji Trail, and also two cycling-hiking loop routes, All-in and All Star, suitable for people with disabilities. Are you ready for an adventure?

**From Loiano (BO)
to Alpe di Monghidoro (BO)**
bwelcome.it/extrabo-bomb



Ph. Lab051

Parks Cycle Routes

These are ten cycle routes within the parks and nature reserves of the Emilia-Romagna region. Three of the routes run through several parks in the Bologna area, such as the Abbazia di Monteveglio Regional Park, the Monte Sole Historical Park, and the Gessi Bolognesi and Calanchi dell'Abbadessa Park. These routes include trails with varying degrees of difficulty, suitable for everyone and accessible by bike, mountain bike and on foot. They are an opportunity to enjoy nature, stunning scenery, and outstanding cultural and artistic heritage.

Various places
bwelcome.it/extrabo-parkcycle

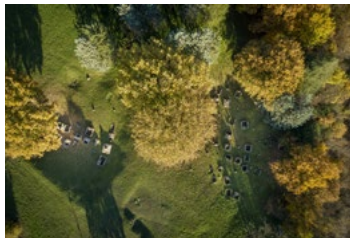


Ph. Piergiorgio Sorgetti

Navile Cycle Route

The Navile canal was built in the 12th century to connect Bologna to Venice: if you go along this cycle route that runs along it, you will come to the municipalities of Castel Maggiore and Bentivoglio, where the Bentivoglio family castle is located, complete with nearby mill, and then on to Malalbergo. Along the route is the ecological rebalancing area "Ex Risaia", one of the most important wetland areas in the central-eastern plain and home to pink flamingos and many other protected species.

From Bologna to Malalbergo (BO)
bwelcome.it/extrabo-navileroute



Ph. Lab051

On the Trail of the Etruscans Cycle Route

Not only a cycle route, but also a historical journey to explore important Etruscan sites.

The Etruscans left a remarkable cultural legacy in the Po Valley and in central Tuscany. The route is 232 kilometres long and takes 10 days to complete. From Valli di Comacchio (FE) to Piombino (LI) you will cross the Bologna stretch, with the towns of Budrio, Villanova di Castenaso and its ancient traces of Villanova's civilisation, Bologna, Sasso Marconi and Marzabotto, where you can visit the Etruscan city of Kainua and Grizzana Morandi.

From Comacchio (FE) to Piombino (LI)
bwelcome.it/extrabo-etruscans



Ph. Piergiorgio Sorgetti

Reno Cycle Route

The Reno River has always been a landmark in the plains around Bologna as it winds along, with banks and embankments built to prevent it from overflowing: a cycle route now goes along it, allowing cyclists to visit various municipalities, including Pieve di Cento, known as the “Little Bologna” due to its rich artistic and architectural heritage. On the north bank of the river, you can view the ecological rebalancing area “La Bisana” and then go down again towards the mouth of the river.

From Bologna to Mar Adriatico
bwelcome.it/reno-cycle-route



Ph. The Crowded Planet

The Sun Route Self Guided Bike Holiday

Saddle up for the itinerary from Bologna to Verona along the Sun Cycle Route and experience the thrill of riding a section of EUROVELO 7, which in the future will connect the North Cape to Malta.

8 days of pure fun, sport, art, food and wine and tradition to be discovered by bike in a slow and sustainable way.

Price includes

- 7 overnight stays with breakfast in Hotel*** or similar
- 6 cycling itineraries: navigation app and PDF road book
- Bike pick-up in Bologna
- 8am-8pm Assistance and Medical Insurance

From €660

Scan the QR code and purchase



extrabio.life/sunroute

Focus

The Bicipolitana

Bologna's Bicipolitana is Italy's first metropolitan cycling network, with more than 1,000 km of routes and two main networks for everyday and leisure travel, aimed at reducing climate-changing emissions and increasing the sustainability.

It consists of 34 lines, 20 of which are for everyday travel and 14 lines are dedicated to cycle tourism via, among others, the Sun Route.

As of today, about 40% of the network is realised, of which 75% on protected lanes and the rest on shared lanes (cycle lanes, 30 zones, predominantly cycle roads), and work is in progress with the goal to complete by 2030.

One of the aims of the Bicipolitana project is to allow citizens to travel their everyday routes fully independently and safely, along defined and marked cycling routes, but also to encourage visitors and cyclists to explore the distinctive natural attractions of the metropolitan area, rediscovering a new way of getting around and travelling.

Find out more on
bicipolitanabolognese.it



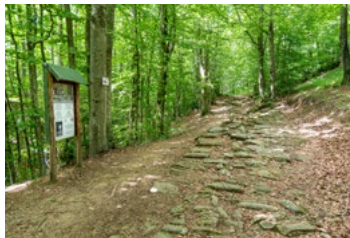
Paths and Routes



presented by
Paolo Piacentini

**President of Federtrek and creator – for the Ministry of Cultural
Heritage and Activities and Tourism – of the digital Atlas of Italy's
walking routes (Atlante dei Cammini italiani).**

**Get your legs ready,
fill up your water
bottle and wear
comfortable shoes.
Hiking in nature near
Bologna is something
you didn't expect
to experience, but
is easy to describe.
Don't forget your
backpack!**



Ph. Lab051

Path of Gods

Setting off from Piazza Maggiore knowing that you can get to Florence with your own legs is a truly unique experience. Originally founded in the late 1980s by a group of hikers from Bologna, the walk is 125 kilometres long and is divided into five or six stages; it can be entirely covered in just under a week. Walking along the Path of Gods is a fascinating experience that allows you to discover the nearby Apennines: as you walk up and down the hills leading to the ridges, you will feel welcomed in a place that perfectly meets the needs of travellers in the third millennium.

From Bologna to Firenze
bwelcome.it/extrabo-gpx



Ph. Lab051

Wool and Silk Road

The Wool and Silk Road also starts in Piazza Maggiore and leads to Pistoia, a 130-kilometre long route consisting of six stages that can be covered on foot in six or more days. The cities of Bologna and Pistoia share a common production history and the hiking route combines the opportunity to explore beautiful mountain areas, steeped in excellence and tradition, with the extensive cultural heritage of these two cities. This walk is also suitable for mountain bikes, since the stretch is divided into three stages of about 40 km each along the dedicated gpx circuit.

From Bologna to Pistoia
bwelcome.it/extrabo-wsr



Ph. Lab051



Ph. Lab051

The Gothic Line

Hiking along the route that left such a tragic mark on our country's recent history is like taking a trip down memory lane as you will be able to learn more about World War II. The route crosses the Bolognese Apennines, from Lake Scaffaiolo in the Corno alle Scale Regional Park to Riolo Terme, along the Sentiero Italia route. Covering a distance of almost 175 kilometres, this walk goes through woodland and natural areas of outstanding value such as Monte Sole Historical Park, Pliocene Spur Nature Reserve, and Vena del Gesso Romagnola Park.

**From Lago Scaffaiolo (BO)
to Riolo Terme (RA)**
bwelcome.it/extrabo-gl

Alta Via dei Parchi route

Alta Via dei Parchi is a route that invites visitors to discover the regions of Emilia-Romagna, Tuscany and Marche on foot. Along the 500 km walk you will cross up to eight parks, with up to 27 stages in total, where you will immerse yourself in luxuriant vegetation. The Bologna stretch starts from Lake Scaffaiolo and goes through the Corno alle Scale mountain range, the centuries-old Poranceto forest and all the way to Borgo Tossignano. On this route you can take in the unspoilt scenery, amidst ancient chestnut groves and sparkling selenite slopes in Vena del Gesso Romagnola Park.

**From Berceto (PR)
to Eremo Madonna del Faggio (AR)**
bwelcome.it/extrabo-avpr



Ph. Wildlab

Via Mater Dei route

Via Mater Dei is a 157-kilometres-long route dedicated to the Marian Sanctuaries of the Bolognese Apennines, which intersects with the Path of Gods at Madonna dei Fornelli (BO). As I have walked the two legs of the route from Bologna to the small hamlet of San Benedetto in Val di Sambro in just one day, I would like to share my memories of those unforgettable moments, in which I enjoyed the warm welcome I received in these places, which, for a hiker, are the heart and soul of the journey, and of the spiritual path as well.

From Bologna to Riola (BO)
bwelcome.it/extrabo-vmdei



Ph. Lab051

Piccola Cassia route

Piccola Cassia route is an itinerary along the stretch of the Emilian Apennines crossed by the ancient Romans, who used it to reach the central Po Valley. It is a highly evocative 170 km route, rich in historical and religious heritage, including Nonantola Abbey, in the Modena area, Monteveglio Abbey, Castello di Serravalle, Pieve di Roffeno and Rocca Corneta, in the Bologna area. Explore this fascinating rural landscape featuring centuriated plains, mountainous ravines and the large meadows of the Apennine ridges.

From Nonantola (MO) to Pistoia
bwelcome.it/extrabo-pcroute



Ph. Lab051

Via dei Gessi e dei Calanchi path

A 102-kilometre walk through a wide variety of landscapes awaits hikers along the Via dei Gessi e dei Calanchi route. A walking route connecting Bologna, Brisighella (RA) and Faenza, through the hills of Emilia-Romagna. Consisting of seven stages, you will go on a hike at different altitudes, where you can enjoy the pure air that nature's beauty has to offer.

On this itinerary you will be able to discover extremely fragile environments such as the chalk outcrops in Gessi Bolognesi e Calanchi dell'Abbadessa Regional Park. A true natural gem.

From Bologna to Faenza
bwelcome.it/extrabo-chalk



Ph. Lab051

Via del Fantini route

This route owes its name to Luigi Fantini, a researcher and speleologist from Bologna who contributed to the opening of many caves in the Gessi Bolognesi park. This 50 km hiking trail starts in the hills of San Lazzaro di Savena near Bologna and arrives in San Benedetto del Querceto through Val di Zena. The trail enters the Nature Reserve of the Pliocene Foothills, up to Monte delle Formiche, and then ends in the Idice Valley. It is accessible both on foot and by bicycle and is often muddy terrain.

From San Lazzaro di Savena (BO) to S. Benedetto del Querceto (BO)
bwelcome.it/extrabo-vfroute



Ph. Lab051

St. Anthony's Way

St. Anthony's Way is a spiritual walk that offers the opportunity to relive the life of St. Anthony of Padua. Opened in 2010, it is 431 kilometres long, consists of 22 stages and runs through the regions of Veneto, Emilia-Romagna and Tuscany, starting from the Antoniani Sanctuaries of Camposampiero in Padua and ending at the Sanctuary of La Verna in Tuscany. Along the Bologna stretch, you will be able to visit symbolic sites such as the Sanctuary of the Madonna di San Luca, Gessi e Calanchi Park and the charming hamlet of Dozza.

**From Camposampiero (PD)
to Chiusi della Verna (AR)**
bwelcome.it/extrabo-saw



Ph. Lab051

Via dei colli route

Walking is all about taking in the scenery, parks and villages along the trail as well as enjoying traditional local food and wines. The Via dei Colli route satisfies the needs of slow tourism and oenology enthusiasts, since it is a dedicated hike covering a distance of about 75 km. Winding its way along the rolling hills around Bologna, setting off from Pianoro and reaching Bazzano, it takes hikers across breathtaking slopes with stunning views. Enjoy discovering the production areas of DOC and DOCG wines and wine cellars, while also admiring the Barbera, Sauvignon and Cabernet vines.

From Pianoro to Monteveglio
bwelcome.it/extrabo-hills



Ph. Lab051

Flaminia Minor road

This route, which is still being studied, goes along an ancient Roman road, the Flaminia Minor, which was built at the time of consul Gaius Flaminius, in 187 BC. It is a truly charming hike that offers the opportunity to learn more about the history and origins of the surrounding villages: setting out from Ozzano dell'Emilia, whose hamlets were built on the ruins of the ancient Roman city of Claterna, along the ancient Via Emilia, you will get to the hamlets of Idice and Mercatale, arriving in Tuscany. The walk is accessible all year round, except for hot summer and cold winter periods.

From Bologna to Firenze
bwelcome.it/extrabo-fmroad



Ph. Piergiorgio Sorgetti

Trekking for all tastes

The wonders of nature in Bologna await you. Enjoy the pleasure of walking through lush forests, the rolling hills or the long stretches of the Bolognese plains accompanied by an expert guide or on your own. The proposals are varied and suitable for everyone!

Highlights

- Excursions where history meets nature
- Walks through the most famous trails, oases and forests
- Professional guide (if available)

From €15

Scan the QR code and purchase



extrabo.life/activities

Focus

Accessible paths

Bologna has walking trails for all tastes, suitable for adults, children and people with disabilities.

The Path of the Gods and the Wool and Silk Road are two major hiking routes in the Tuscan-Emilian Apennines accessible to people with motor, visual and cognitive disabilities both on foot and by bicycle. The experiences offered by associations such as AppenninoSlow, NoisyVision Onlus, Fondazione per lo Sport Silvia Parente and La Girobussola, combine the enjoyment of sport and desire to be part of the community with the need to be in touch with nature, making new adventures available to everyone, without prejudice of any kind. A stretch of the Piccola Cassia route is also accessible: this has been confirmed by the Klick's on way project of the Freewheels Onlus association, which has promoted an excursion from Piacenza to the Cisa Pass. Some trails are accessible not only on foot, but also by hand bike, tandem and mountain bike, for example the one in the Sillaro Valley, with four itineraries combining culture and food & wine; the one from Castelluccio to Madonna del Faggio and the off-road circuits of the Bologna Montana Bike Area.

Find out more on

extrabo.com/accessible-tourism



Villages to shoot



presented by
Irmo Roberto Pradelli

A keen photographer, influencer and travel blogger who visits the lesser-known as well as the more touristy places in the Emilia-Romagna region. He often says that “a photo comes to life when emotion connects the heart, eyes and brain”.

Nestled in untouched nature, at the foot of mountain ranges or along the vast open countryside, the hamlets around Bologna are a highlight of the landscape heritage of this territory and are ideal spots for photography lovers



Ph. Lab051

Borgo La Scola

For taking pictures outside the city centre, I would recommend starting with the medieval Borgo La Scola, in the municipality of Grizzana Morandi. It's one of the preserved local hamlets, strategically located in the Apennine mountains. In fact, the hamlet towers over the valley below it and is named after a Lombard word, Sculca, which means "guard post". I would also recommend stopping at the nearby Church of Santa Maria Assunta in Riola, one of Finnish architect Alvar Aalto's major architectural works.

**Vimignano-la Scola,
Grizzana Morandi (BO)**
bwelcome.it/extrabo-bls



© Comune di Budrio

Budrio

Set in the north-eastern plains around Bologna and not far from the city, the historic centre of Budrio dates back to the 17th-18th century and features traditional Bolognese style porticoes. The town has a relaxed atmosphere and tourists can enjoy visiting its art galleries such as the Consorziale Theatre, the Archaeological Museum, the Puppet Museum and the Ocarina Museum. The ocarina is a unique and globally renowned ceramic wind instrument, and every two years Budrio holds a special international Ocarina Festival.

Ocarina Museum
Via Garibaldi 35, Budrio (BO)
extrabo.com/budrio



© IF

Dozza

The best place to look for undiscovered, photo-friendly spots must surely be Dozza, near Imola, recently declared one of Italy's most beautiful villages. Dozza is a genuine open-air museum: various great artists have used the façades and walls of the village's houses as a canvas for their creations. Since 1960, Dozza has been home to the Biennial of the Painted Wall, during which more than 200 artists have painted the walls of this village. The local Rocca and its Museum are also worth a visit, as is the Enoteca Regionale dell'Emilia-Romagna wine bar and cellars.

Rocca di Dozza
Piazza Rocca, Dozza (BO)
extrabo.com/dozza

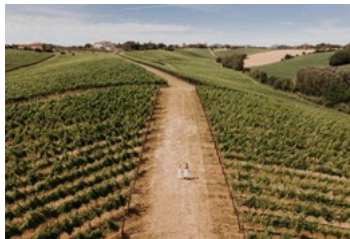


Ph. The Crowded Planet

San Giovanni in Persiceto

Travelling through the flat you arrive in San Giovanni in Persiceto, cradle of a renewed urban street art movement that embraces the village's history and traditions. Close to the town centre is Piazzetta Betlemme, known as “Piazzetta degli inganni”, a wonderful example of urban reclamation. Here, the cafés and bars with outer walls adorned with artworks create a unique atmosphere. The town dates back to the Middle Ages and hosts the centuries-old Persiceto carnival, a must-see for photography fans.

Piazzetta degli inganni
Via Betlemme 31,
San Giovanni in Persiceto (BO)
bwelcome.it/extrabo-sgp



© Umberto Cesari



Ph. Lab051

Castel San Pietro Terme

Another must-see is Castel San Pietro Terme, a 'Slow City' par excellence that stands out for its high quality of life and the many services available to citizens and visitors. The thermal spa, vineyards, golf, mountain biking or sunbathing in the green Lungo Sillaro Park are some of the activities best appreciated by those who visit these places in the Imola area. The symbol of the town is the Cassero, built in 1199, the year the town was founded.

Civic Theatre Cassero
Via Matteotti 1,
Castel San Pietro Terme (BO)
extrabo.com/castel-san-pietro-terme

Bazzano

The small hamlet of Bazzano is where I truly feel at home. Located between Bologna and Modena, this hamlet is beautiful in any kind of light. The ancient Rocca of the Bentivoglio family, a stunning location, has shaped the hamlet's history since before the year 1000. Ugo Foscolo was imprisoned here in 1799 after being captured by the invading Austro-Russians. Nearby is the Abbazia di Monteveglio Regional Park, a protected natural area from where you can travel ancient routes such as the Piccola Cassia.

Rocca dei Bentivoglio
Via Contessa Matilde 10,
Valsamoggia (BO)
extrabo.com/valsamoggia



Ph. Vincenzo Terracciano

Pieve di Cento

I would also recommend a trip to Pieve di Cento, known as “the little Bologna”: the unique 16th-century porticoes in the historic centre closely resemble those of Bologna. The village is full of history and retains the layout of the Roman castrum, augmented by the 9th-century parish church and the medieval and Renaissance-Baroque town. The Town Hall, which houses the Music Museum and the Alice Zeppilli Theatre, is an ideal setting for photoshoots. A must-see is the Magi ‘900 Museum, an eclectic and prestigious private art exhibition.

Alice Zeppilli Theatre

Piazza A. Costa, 17, Pieve di Cento (BO)

extrabo.com/pieve-di-cento



Discover villas and castles

Set off to discover the passing of time by visiting villas and castles in the area. Amidst mediaeval and baroque architecture, listen to the history of some of Bologna's most illustrious families.

Highlights

- Special openings of historic buildings and villas
- Professional guided tour
- A journey through history between art and culture

From €15

Scan the QR code and purchase



extrabo.life/castles

Focus

Monumental trees in the city

With their tall, strong trunks, Bologna's centuries-old monumental trees provide shade for some of the city's most iconic sites, giving the city and its green spaces a unique character.

A total of eight valuable specimens of trees have been identified in the city, which are symbols of longevity and magnificence that can be admired while walking or cycling. Right in the city centre, when leaving Piazza Malpighi, is a huge Oriental plane tree; heading towards Piazza Minghetti, you can cool off in the shade of the common plane tree, until you get to the ginkgo biloba trees in Piazza Cavour and Largo Respighi. The latter, also known as the 'tree of 40 ecus', gives the area around the historic City Opera House a special charm. Heading towards the city centre's largest green space, Margherita Gardens, you will be able to spot the huge evergreen sequoia; heading towards the hills, you will find it impossible not to notice the Atlas cedar at Villa Spada and the Himalayan cedar in Villa Ghigi Park. Last but not least, a specimen of English oak, a living example of the agricultural landscape of the plain, is sure to attract curious visitors at Via dei Bordone 25.

Find out more on
[bwelcome.it/trees](https://www.bwelcome.it/trees)



Disclosing Bologna

Present-day Bologna, the result of behind-the-scenes work, commitment to social and territorial promotion, excellence, local and adopted citizens.

Artistic director of Mente Locale Film Festival

**Leena
Pasanen**



Interview with the Finnish artistic director of Mente Locale Film Festival and new citizen of Grizzana Morandi (BO)

Can you briefly describe your work and its impact on the local area and community?

I am the artistic director of Mente Locale film festival, in charge of the artistic vision of the festival and part of the committee selecting the films for the programming. The festival has a particular point of view on territories and therefore is giving an insight into how opportunities, challenges and situations are changing and developing in our communities. I do hope that we give food for thought to our audiences as well as possibilities to learn and be inspired and entertained. With our work, we also support independent cinema theatres in the region, which is something our team values a great deal.

Have you got any interesting stories to tell about your business over the years?

I am from Finland, living in Grizzana Morandi, on a farm in the countryside, south of Bologna. As a Finnish person, I used to be quite private and less social and rather intimidated speaking a language that I don't master perfectly. Emilia-Romagna has totally changed me. Now my door is always open to anyone passing by, and I keep talking to them the best way I can, in Italian or with hands. And I cook Finnish salmon soup to anyone who dares to taste it!

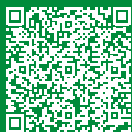
Where do you feel at home in Bologna?

Pignoletto

I love the church of Santa Maria Assunta in Riola. It was designed by the famous Finnish architect Alvar Aalto and is the only building he ever designed for Italy and the only Catholic church he ever designed. I have brought many Finnish and international guests there, and it really is like having a piece of Finland in Italy.

Find out more about Promenade

bolognawelcome.com/en/promenade-bologna





Many tours to discover the best of the city's culture, music and open-air life, in the centre and beyond

From €10



Scan the QR code and
discover the program
bwelcome.it/thisisbologna

è Bologna

Where do I get my tickets in Bologna?



**Scan the QR code and visit mybologna.app
to book the best experiences about culture,
motors, nature and food.**



Promenade is your pocket-sized guide,
perfect to take with you or for your bedside
table, full of tips on what you can expect
to find and hope to discover.

We have done our best to check the accuracy of the information
of this Promenade guide until the time of printing.
However, Bologna Welcome does not assume any responsibility
for errors or changes following printing, or omissions.



All the culture you want with Card Cultura

**Get 365 days of free admission and
discounts for museums, cinema, theatres,
concert halls and much more.**

Find out more on cardcultura.it/en

   #cardcultura



#promenadebologna

Stay up to date on the places, experiences and events by visiting
bolognawelcome.com/en/promenade-bologna

